

## SPECIFICATIONS

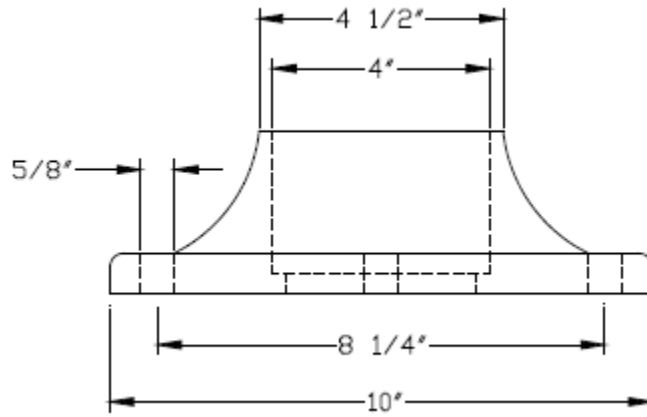
### MODEL # 3701

### TELESCOPING MOUNTING POLE

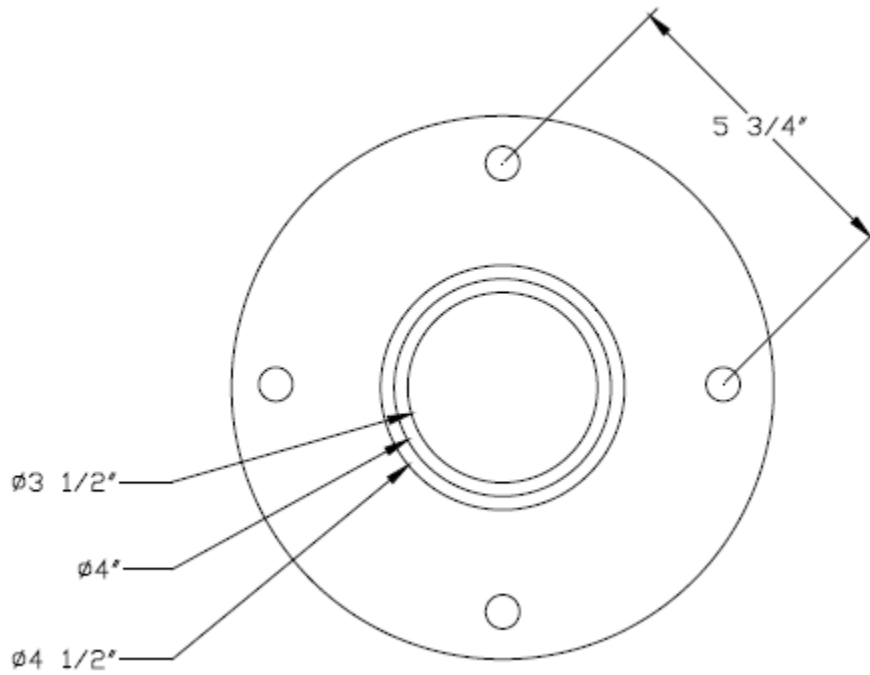


<b>ADJUSTMENT</b>	Telescopes 10.5 to 16.5 ft (3.2 to 5.03 m)
<b>DIMENSIONS</b>	<p><b>Pole Base Flange</b> 10 inches (254 mm) Diameter 2.75 inches (69.85 mm) High</p> <p><b>Pole Height</b> Collapsed – 10.5 feet (3.2 m) Extended – 16.5 feet (5.03 m)</p> <p><b>Pole Diameter</b> Upper Section – 3.5 inches (88.9 mm) OD. Lower Section – 4.0 inches (101.6 mm) OD.</p>
<b>CONSTRUCTION</b>	<p><b>Upper Section / Inside Pole</b> 3.5 inches (88.9 mm) OD. w/.216 inches (5.4864 mm) wall, 6061-T6 extruded seamless aluminum tubing</p> <p><b>Lower Section / Outside Pole</b> 4.0 inches (101.6 mm) OD. w/.188 inches (4.7752 mm) wall, 6061-T6 extruded seamless aluminum tubing Handhole centered 18 inches (457.2 mm) above the bottom of the shaft. Handhole cover secured in place by stainless steel screws.</p> <p><b>Base Flange</b> One-piece cast aluminum with 8.25 inches (209.55 mm) bolt centers between four 5/8 inch (15.875 mm) through-holes.</p>
<b>FINISH</b>	Brushed aluminum.
<b>ATTACHMENT</b>	Via pole base flange. Poles are complete with all hardware except base anchor/mounting bolts and nuts.
<b>SHIPPING WEIGHT</b>	90 lbs (41 kg).

POLE BASE FLANGE DETAILS:



SIDE VIEW



TOP VIEW