

SPECIFICATIONS

MODEL # 3613
LED SIGNAL WITH ALUMINUM TRAFFIC HEAD



HOUSING	1-SECTION ALUMINUM WITH CAP VISOR AND TERMINAL BLOCK OPTIONAL: TUNNEL VISOR, NO VISOR
HOUSING COLORS	STANDARD: FEDERAL YELLOW OPTIONAL: SIGNAL GREEN, BLACK, OR CUSTOM COLORS (OPTIONAL COLORS AT ADDITIONAL COST)
HOUSING DIMENSIONS	8": 10.0"H X 10.0"W X 7.0"D 12": 13.5"H X 13.5"W X 7.0"D
SIGNAL SIZE OPTIONS	8" OR 12"
SIGNAL COLOR OPTIONS	AMBER, RED, OR GREEN
VOLTAGE OPTIONS	120 VAC, 24 VDC, OR 12 VDC
MOUNTING	2.0" HOLE TOP AND BOTTOM FITS STANDARD 1-1/2" NPT FITTINGS (AVAILABLE SEPARATELY)
OPERATING TEMPERATURE	-40° TO +165°F (-40° TO +74°C)
CERTIFICATIONS	AC MODELS: INTERTEK ETL / ITE VTCSH LED CIRCULAR SIGNAL SUPPLEMENT 2005 DC MODELS: MEET ITE 2005 INTENSITY, COLOR, AND UNIFORMITY

120 VAC MODELS:

MODEL	SIGNAL SIZE	SIGNAL COLOR	NOMINAL VOLTAGE (VAC)	OPERATING VOLTAGE (VAC)	POWER (W)	DOMINANT WAVELENGTH (NM)	MAINTAINED INTENSITY (CD) MIN.
3613-8R	8"	RED	120	80-135	6.4	628	240
3613-8A	8"	AMBER	120	80-135	9.9	589	760
3613-8G	8"	GREEN	120	80-135	6.4	499	450
3613-12R	12"	RED	120	80-135	6.3	625	365
3613-12A	12"	AMBER	120	80-135	10.0	589	910
3613-12G	12"	GREEN	120	80-135	9.5	501	475

24 VDC MODELS:

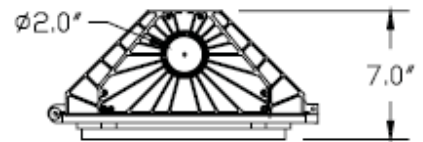
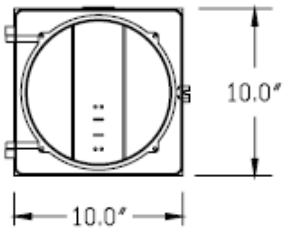
MODEL	SIGNAL SIZE	SIGNAL COLOR	NOMINAL VOLTAGE (VDC)	OPERATING VOLTAGE (VDC)	POWER (W)	DOMINANT WAVELENGTH (NM)	MAINTAINED INTENSITY (CD) MIN.
3613-8R-24	8"	RED	24	10-28	2.4	626	165
3613-8A-24	8"	AMBER	24	10-28	4.3	589	410
3613-8G-24	8"	GREEN	24	10-28	3.4	500	215
3613-12R-24	12"	RED	24	10-28	4.4	626	365
3613-12A-24	12"	AMBER	24	10-28	10	589	910
3613-12G-24	12"	GREEN	24	10-28	6.6	500	475

12 VDC MODELS:

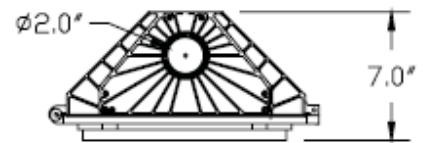
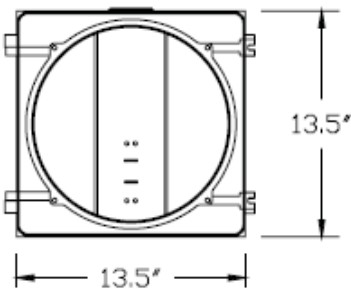
MODEL	SIGNAL SIZE	SIGNAL COLOR	NOMINAL VOLTAGE (VDC)	OPERATING VOLTAGE (VDC)	POWER (W)	DOMINANT WAVELENGTH (NM)	MAINTAINED INTENSITY (CD) MIN.
3613-8R-12	8"	RED	12	10-28	2.4	626	165
3613-8A-12	8"	AMBER	12	10-28	4.3	589	410
3613-8G-12	8"	GREEN	12	10-28	3.4	500	215
3613-12R-12	12"	RED	12	10-28	4.4	626	365
3613-12A-12	12"	AMBER	12	10-28	10	589	910
3613-12G-12	12"	GREEN	12	10-28	6.6	500	475

HOUSING DIMENSIONS:

8-INCH



12-INCH





ORDERING GUIDE:

		Typical product code	3613	-12	A	-24
Model	3613	LED signal with aluminum traffic head				
Size	8	8-inch signal				
	12	12-inch signal				
Signal Color	R	Red				
	A	Amber				
	G	Green				
Input Voltage	24	24VDC				
	12	12VDC				
	(Blank)	120VAC				

INCLUDED ITEMS:

- (1) 1-SECTION ALUMINUM TRAFFIC HEAD
- (1) ALUMINUM CAP VISOR
- (1) LED SIGNAL MODULE
- (1) TERMINAL BLOCK

OPTIONAL ITEMS:

- MOUNTING HARDWARE
- SIGNAL CLOSURE KIT

Additional accessories and warning devices are available from Trigg Industries LLC.
 Contact sales@triggindustries.com for details.