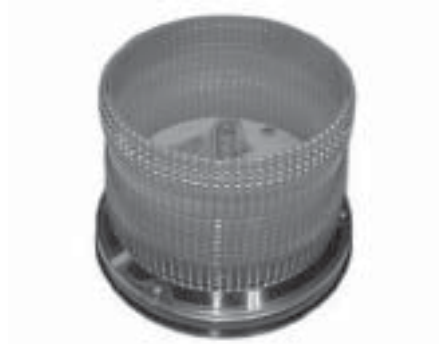


Specifications

**Model # 3610**  
Light Duty Strobe



---

VOLTAGE .....	120 VAC.
CURRENT.....	0.19A +/- 15%.
POWER .....	24 VA..
CERTIFICATIONS .....	UL Listed.
FLASH ENERGY .....	7.5 Joules, Typical.
FLASH RATE .....	60/Minute, Typical.
EFFECTIVE CANDELA .....	80 cd, Typical.
TEMPERATURE RANGE .....	-31° to +151° F (-35° to 66° C).
LENS COLOR .....	Amber, Blue, Clear and Red Durable.
MATERIAL .....	Base/Lens - High strength, high temperature G.E. Lexan.
MOUNTING .....	5 H x 6.2 W inch (13 H x 16 W cm).
DIMENSIONS .....	Pipe thread ½ inch (1.3 cm), surface mount or flange mount. Flash energy and flash rate are specified for double flash operation.
WEIGHT .....	2 lbs (.9 kg).